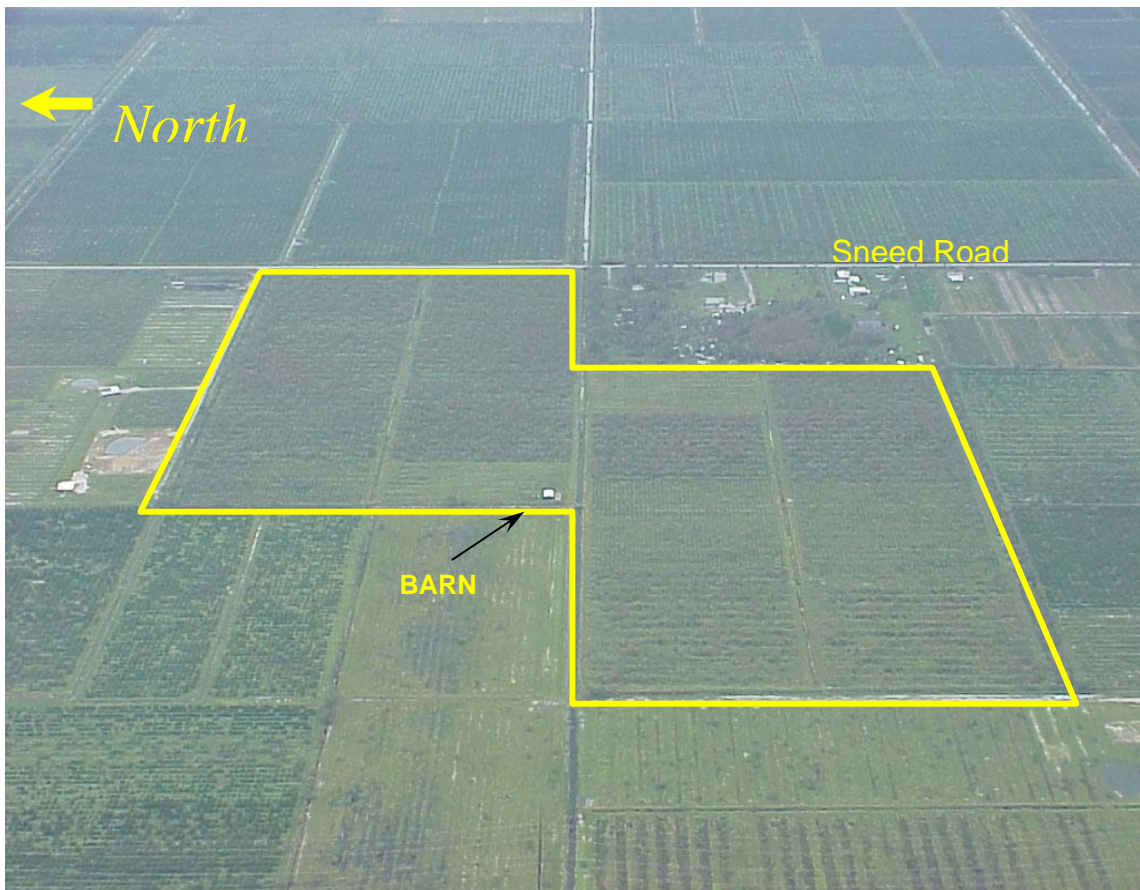


160 ac Tract

1327 ft Paved Frontage on Sneed Road, Saint Lucie County, FL

\$1,900,000.

Land Use: AG-5 Zoning: 1 dwelling unit per 5 acres



Barn and Two Artesian Wells
Located in North Saint Lucie River Water Mgmt District
Each Half – 1 / 4 mile x 1 / 2 mile+-



Directions from the North:

From I-95 take the SR68 (Orange Ave) West Exit. Go west 8 miles to Sneed Rd. Turn left & go south on Sneed Rd. 3 miles. Property & sign will be on your right (west side).

Directions from the South:

From I-95 take the Midway Rd exit (CR 712); turn left. Go west 4-1/2 miles to SR 70. Turn left & go west 2-3/4 miles to Sneed Rd. Turn right & go north on Sneed Road 2-1/2 miles. Property & sign will be on your left (west side).

