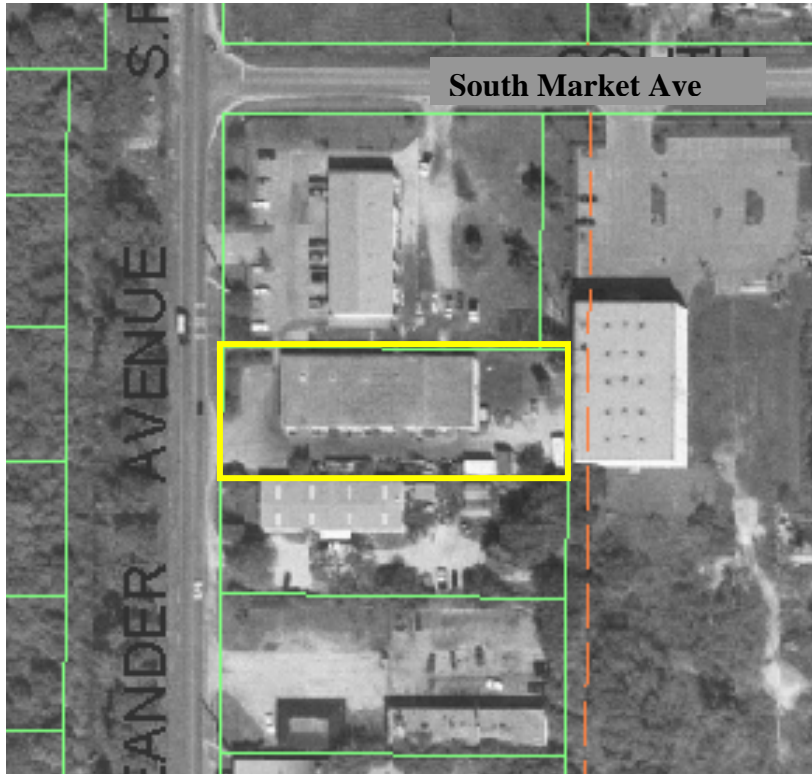


**9,600 sf Light Industrial Building on .72 ac**  
**\$599,000**

**3798 Oleander Avenue ~ Fort Pierce, Saint Lucie County, Florida**

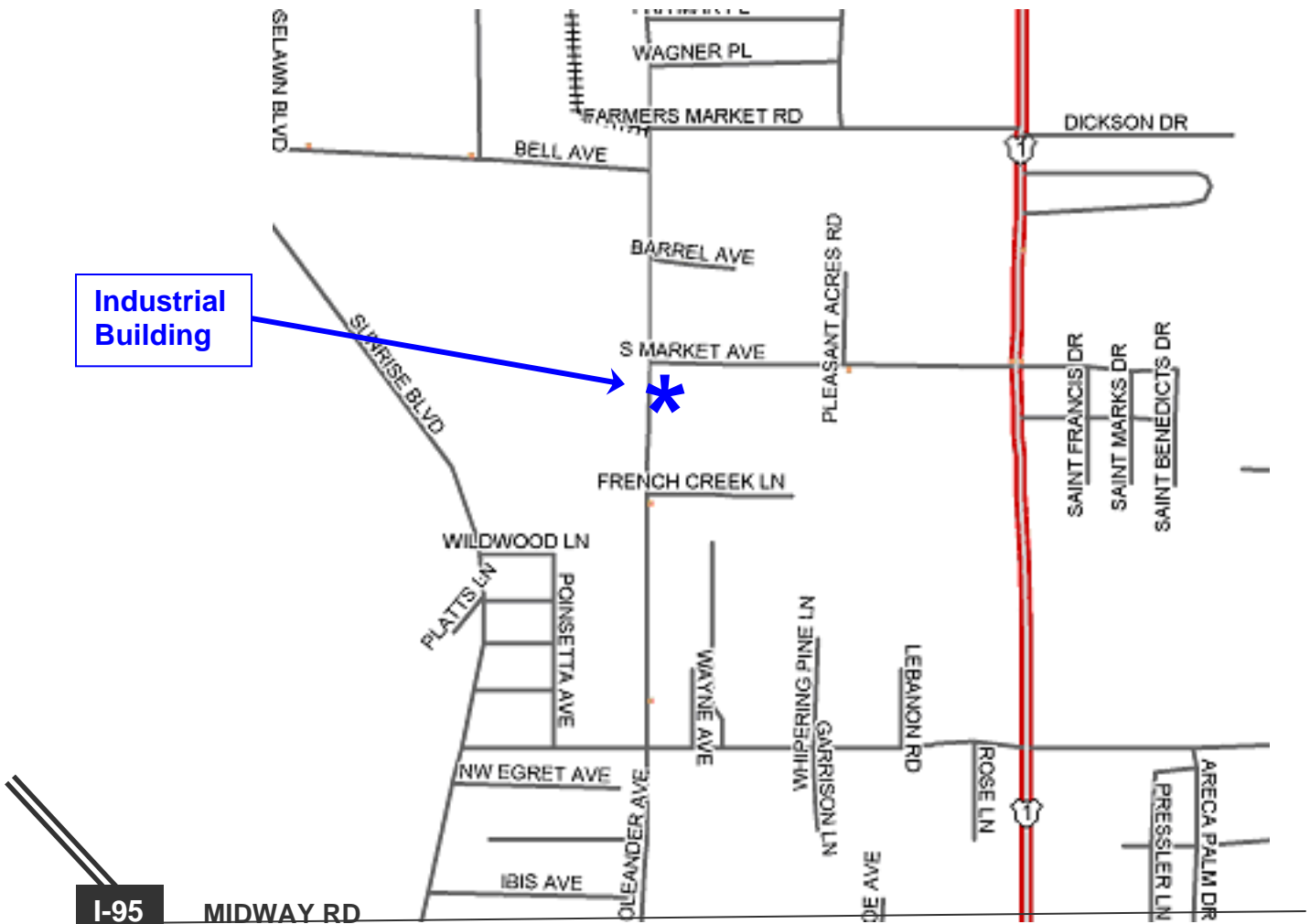


- CBS construction
- Roof: bar joist with concrete decking and tar & gravel
- 12' interior height
- 6 - 10' x 10' roll-up doors plus walk doors
- 3-Phase electric service
- East 3,100 sf fully A/C with dual zones
- West 6,500 sf warehouse with A/C office area
- Currently configured for two tenants

South side of building looking toward Oleander Ave.

**Call for  
Additional  
Details**





( Map NOT to scale)

**Directions from I-95:**

From Midway Road exit #126, go East 4 miles to Oleander Ave., turn left (North), and go 1.25 miles to South Market Avenue. See sign on right side just before corner.