

## 39<sup>+</sup>/- ac Tract

Fort Pierce, Saint Lucie County, Florida

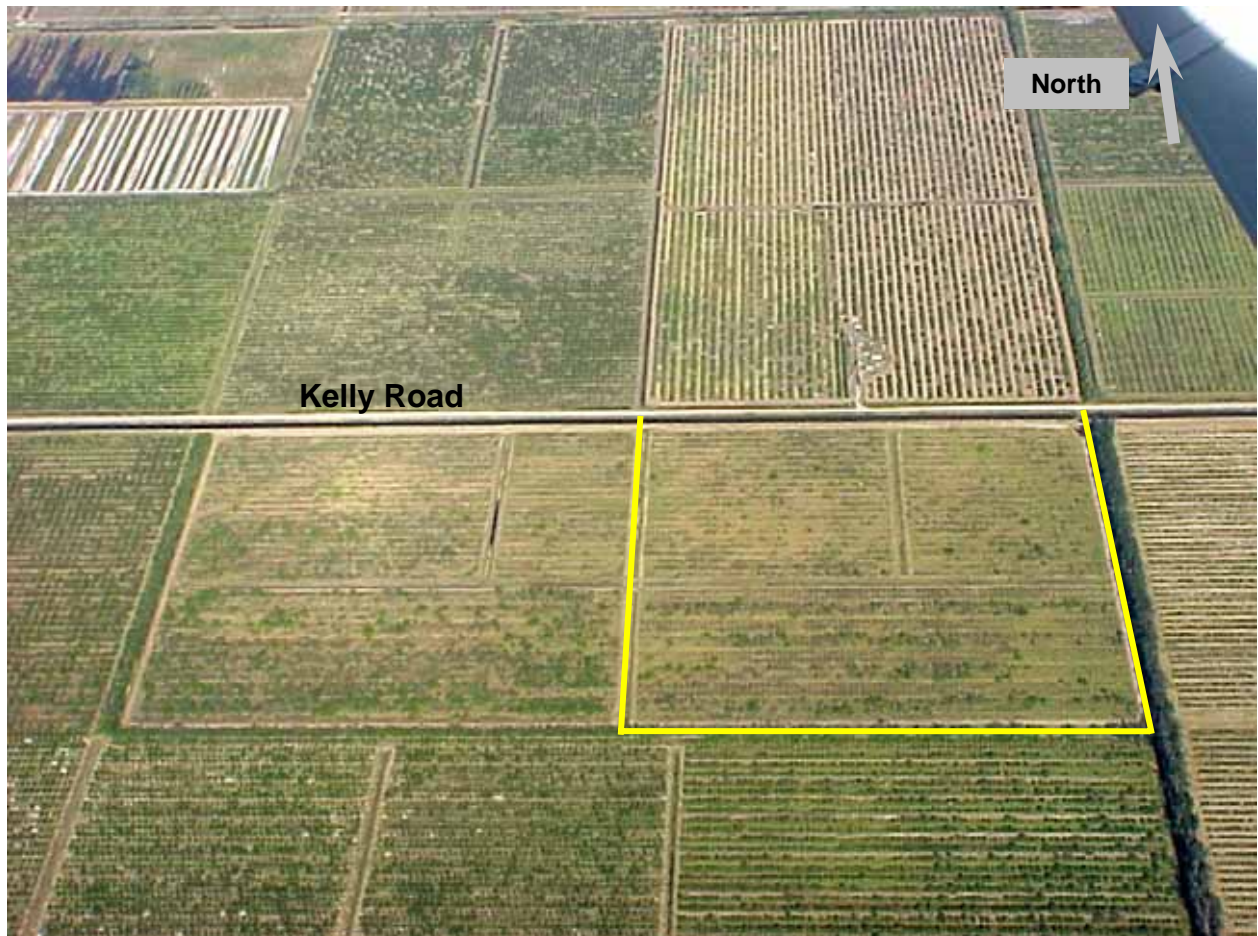
**\$295,000**

**1,330 ft Kelly Road Frontage**

6.5 miles west of I-95 & 1.5 miles south of Orange Ave / SR68

Ag-5 Zoning: one dwelling unit per five acres

Currently fenced for cattle grazing with Ag-exempt taxes



**I-95 Directions:** Exit at Orange Av-West; go west 6.5 miles to Header Canal Road. Turn left (south) and go 1.5 miles to Kelly Rd on right. Go west 1 mile to property.